

448999

# SHAPE AND DEFINE YOUR EYEBROWS WITH THESE FINE GiGi® WAXING PRODUCT SELECTIONS:



## GiGi® STRIP WAX



### GiGi® ALL PURPOSE HONEE

The #1 Wax Worldwide with All-Natural Formula  
Gentle Enough for Delicate Areas

### GiGi® FACIAL HONEE

Specially Formulated for the Delicate Facial Areas  
Removes Unwanted Hair Gently, Effectively and Instantly

### GiGi® CRÈME WAX

Smooth, Creamy Formula for Sensitive Skin  
Conditions and Leaves Skin Silky Smooth

### GiGi® TEA TREE CRÈME WAX

Formulated with Tea Tree Oil • Soothing and Healing Properties

### GiGi® AZULENE WAX

Formulated with Anti-inflammatory Azulene Oil  
Calming Botanical Blend Calms and Soothes Redness

## GiGi® NO STRIP WAX



### GiGi® BRAZILIAN HARD WAX

Fast, efficient and gentle • No Muslin Strips Needed

### Microwave Tweezeless Wax™

Ideal for Minimal Facial Waxing Services • No Muslin Strips Needed

### Microwave Sensitive Tweezeless Wax™

Ideal for Minimal Facial Waxing Services with Azulene  
No Muslin Strips Needed

## ACCESSORIES



### Petite Natural Muslin Epilating Strips

Perfect for Eyebrow and Facial Areas • Pre-cut Size .75" x 4.5"

### PETITE APPLICATORS

Perfect for Eyebrow Waxing • Specifically Sized for Precise Control



# EYEBROW WAXING GUIDE

## STEP-BY-STEP INSTRUCTIONS

American International Industries, Los Angeles, CA 90040  
All (UK) Ltd. Berkshire RG1 7SR  
GiGi® is a registered trademark of All  
Made in USA  
Fabriqué aux États-Unis • Hecho en los EE.UU  
www.aiibeauty.com

14-7206

Beautiful Brows by GiGi®

## INTRODUCTION

The process for removing hair to create an attractive eyebrow can be divided into three sections: brow beginning, brow arch and brow end. If your client does not have a well-shaped eyebrow or if you want to correct an eyebrow shape, use the following technique as your guide.

### BROW BEGINNING:

Rest a clean spatula at the widest part of your client's nose. Let the spatula pass directly over the inside corner of her eye. If you can't see the brow at this point because the spatula covers it, her eyebrow begins in the correct place. If the end of the brow extends past the spatula, mark off that point with an eyebrow pencil for hair removal. (In some cases, hair may not grow to the desired point- eyebrows then appear to be spaced too far apart. Advise your client to pencil in this area lightly.) (see A)



### BROW ARCH:

Ask your client to look straight ahead. Using the center of her pupil, tilt the spatula from the widest part of her nose over her eye. The correct placement of the brow arch is the point where the spatula meets the eyebrow. If the arch is not correctly placed, use an eyebrow pencil to mark the corrections. Gently sketch in the desired lines, beginning at the inner corner of the eye and continuing to the point where the arch should be. (see B)



### BROW END:

Again, resting your spatula at the widest part of your client's nose, slant it just past the outside end of the eye at the point in which the spatula meets the brow line. If the brow extends beyond the spatula, mark for hair removal. (see C)

After the correct shape is determined, use the following steps to remove hair with GiGi® Honee.

### STRIP WAX EYEBROWS INSTRUCTIONS

1. Apply your GiGi® Pre-Hon generously to the area using a Q-Tip or cotton ball. Allow to dry thoroughly because the wax will not adhere if the skin is wet.
2. Apply a light coat of GiGi® Pre-Epilating Talc.
3. Take a small eyebrow applicator and dip the end a quarter inch into the wax (one drop goes a long way).
4. Start at the outermost corner of the eyebrow to enable your client to become accustomed to the warmth of the wax. Holding the eyebrow area taut, place a thin, transparent layer of wax in the direction of hair growth with the tip of the applicator.



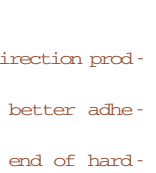
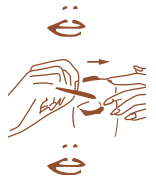
5. Immediately apply your epilating strip and rub in the same direction as the wax was applied (direction of the hair growth). To smooth the strip on, hold brow up and use the bone as your support to avoid applying pressure to eye area.
6. Holding the skin taut, and as close to the skin as possible, remove the strip quickly in the opposite direction.
7. With your free hand, immediately apply FIRM pressure to the waxed area. This will remove any tingling sensation.
8. Repeat the process on the second eyebrow using the same technique.
9. Before you begin the center of the eyebrows (the area over the bridge of the nose), be sure to determine the direction of the hair growth. Apply the wax in that direction only.
10. Apply your epilating strip and rub in the direction of hair growth. Immediately remove the strip, as quickly and as close to the skin as possible, in the opposite direction of hair growth.
11. Remember to apply FIRM pressure immediately after the pull using the palms of your hands or your fingertips.
12. Finish with GiGi® Wax Off. Massage gently.

**REMEMBER! Never re-apply the liquid wax to the same area twice. Instead, use tweezers to remove any stray hairs. Also, eyes should always remain closed during procedure.**

Note: If a drop of wax falls into the eyelashes, calmly instruct your client to keep her eye gently closed (not squeezed shut). Apply a drop of petroleum jelly on area and remove with eyebrow comb. Wipe with moist tissue, and then place cotton swab at corner to absorb residue.

### NO STRIP WAX EYEBROWS INSTRUCTIONS

1. Remove makeup and oil with soap and warm water, then pat dry.
2. Using an applicator stick, apply GiGi® Tweezeless Wax starting under the brow at the bridge of the nose. (Note: Always apply wax in direction of hair growth. Remove in opposite direction.)
3. Follow the natural brow line with a steady flow of wax, moving toward the outer corner of the eye.
4. Gently smooth wax with fingertips while product is still soft. Work in direction product was applied.
5. Wait one minute. This will ensure better adhesion.
6. Hold skin taut with one hand. Lift end of hardened wax strip with fingertip of other free hand.
7. Grip firmly and with one quick, gentle motion, remove wax strip in the opposite direction from which wax was applied.
8. Repeat process for the other eyebrow.
9. Use a similar procedure for removing unwanted



hair above and between the eyebrows.

10. After procedure is complete, use GiGi® Wax Off to remove any remaining wax and to moisturize the skin.